

高雄 人氣酒店推薦



出發及完成入住日期 Travel & Stay Period: 10 May – 31 Dec 2025

❶ 旺季出發,轉乘其他 Booking class 附加費等請向本公司職員查詢

套票包括 Package Details

- ✧ 來回香港至高雄長榮航空經濟客位機票乙張
Round trip air ticket between Hong Kong and Kaohsiung by EVA AIR
- ✧ 2-3 晚酒店住宿 2-3 nights accommodation
- ✧ 0.15%旅監局印花徵費 0.15% TIA Levy



Product code:
JT-KHH03BR-07

"V" Class

凡購買本套票

每位多包高雄捷運・輕軌 1 日套票

高雄美麗島館 PaPa Whale [www](http://www.papawhale.com)

位於新興區，捷運中央公園站或美麗島站步行 8 分鐘即可抵達。住宿毗鄰六合夜市、光之穹頂、南華商圈、新崛江商圈等熱門景點，是來高雄市探索城市魅力，放鬆身心的理想住處。

No. of Nights	Room Type (Twin Sharing, per person)
	SOHO Double Room (21 sqm)
2 Nights	From HK\$1,290
3 Nights	From HK\$1,490

*此房型不提供窗戶

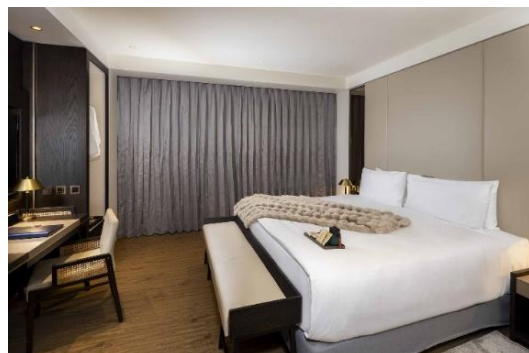


天成逸旅 - 舶寓高雄 Voyage Kaohsiung by Cosmos Oasis [www](http://www.voyagekaohsiung.com)

2024 年 7 月開幕，捷運中央公園站 1 號出口，步行距離約 7 分鐘。酒店以「游港都 緻生活」為主題，Voyage 有旅行、航程之意，因此酒店以海港、貨櫃為設計概念。酒店只擁有 28 間匠心獨具的各式客房，房內大面落地窗，自然風光完美呈現。

✂ 含早餐

No. of Nights	Room Type (Twin Sharing, per person)
	Superior Room (26 sqm)
2 Nights	From HK\$1,750
3 Nights	From HK\$2,150





德立莊酒店 - 高雄博愛館 Midtown Richardson - Kaohsiung

WWW

位於高雄三民區，距離捷運後驛站步行 2 分鐘，鄰近高雄著名景點 - 愛河之心及吉林夜市。

No. of Nights	Room Type (Twin Sharing, per person)
	Twin Room (15 sqm)
2 Nights	From HK\$1,290
3 Nights	From HK\$1,490

*此房型不提供窗戶



根據台灣政府環保政策規範

由 2025 年 1 月 1 日起，酒店不再為旅客提供一次性備品及瓶裝水

細則及條款 Terms & Conditions:

1. 套票價錢以每位計算，如有更改，恕不另行通知。Prices quoted are on per adult basis and subject to change without prior notice.
2. 只適用於新預訂之客人 Valid for new bookings only, subject to availability.
3. 以上酒店房種資料及圖片只供參考。The above hotel room types and photos are for reference only.
4. 可根據要求提供單人房、三人房或小童價錢，請聯繫我們查詢。Single, Triple or Child prices are available on request basis. Please contact us for details.
5. 住宿以兩人一室為主，若以單人報名，則需補單人房間差額。
Accommodation is mainly for double occupancy. If a single person signs up, the single room supplement needs to be paid.
6. SHARE TWIN: 2 張床房/SINGLE ROOM: 單人房/SEMI DOUBLE: 房間面積較 TWIN/DOUBLE 細小或相等於 SINGLE/TWIN+EXTRA BED: 2 張床房加床。而加床並非正式固定床，尺寸會較小及有機會是梳化床/拉床/摺床。SHARE TWIN: 2 single bed/SINGLE ROOM: one single bed /SEMI DOUBLE: Room size is smaller than TWIN/DOUBLE ROOM or same as SINGLE ROOM/TWN+EXTRA BED: 2 Single Bed with Extra bed. Extra bed is not a formal fixed bed, the size will be smaller and it will be sofa bed/broach bed/folding bed.
7. 如果您希望在同一家酒店逗留更長時間，我們可以安排住宿延期請聯繫我們查詢。We can arrange to accommodation extension if you wish to stay longer in the same hotels. Please contact us for prices and details.
8. 需另加收旺季附加費。Subject to high peak season surcharge.
9. 必須在出發前至少 7 個工作日進行預訂。Reservations must be made at least 7 working days prior to departure.
10. 預訂確認後，恕不更改，取消和退款。No amendment, cancellation and refund once booking is confirmed.
11. 有關預訂條款和條件，請瀏覽: <https://www.jebsentravel.com/terms-and-conditions/>
For booking terms & conditions, please visit <https://www.jebsentravel.com/terms-and-conditions/>
12. 以上價錢不包括離境稅、香港機場保安費、航空保險附加費、航空燃油附加費、季節性附加費和旅行社服務費。Departure taxes, Hong Kong Airport Security Charge, airlines insurance surcharge, airlines fuel surcharge, seasonal surcharge and travel agency service fee are not included in the above fares.
13. 這些金額將在確認訂單後確定，並將添加到最終票價中。These amounts will be determined upon your confirmation of booking and will be added to the final fare.
14. 此優惠不能與其他任何促銷、優惠券或折扣一起使用。The offer cannot be used in conjunction with any other promotions, offers, vouchers or discounts.
15. 如有任何爭議，本公司保留最終決定權。The Travel Agency reserves final decision in case of any disputes.

Last Update: 2 May 2025
NEW / 150PP