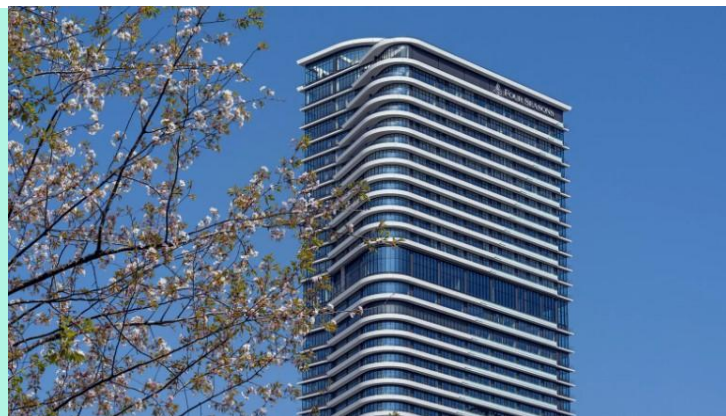


Osaka Luxury Hotel Collections Four Seasons Osaka

出發及完成入住日期 Travel & Stay Period: 15 Jan – 31 Dec 2025

❗ 旺季出發,轉乘其他 Booking class 附加費等請向本公司職員查詢



套票包括 Package Details

- ✧ 來回香港至大阪國泰航空經濟客位機票乙張
Round trip tickets between Hong Kong and Osaka by Cathay Pacific
- ✧ 2-3 晚酒店住宿連每日早餐 2-3 nights accommodation with daily breakfast
- ✧ 0.15%旅監局印花徵費 0.15% TIA Levy



Product code:
JT-KIX03CX-45

"Q" Class 2-7D
Light



NEW 大阪四季酒店 現已盛大開幕

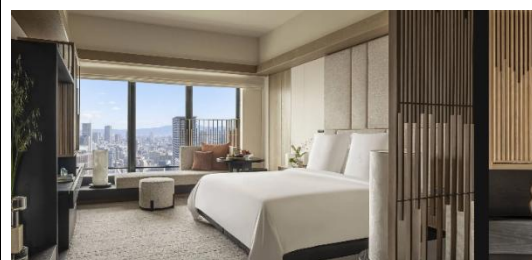
WWW



繼東京及京都後,四季酒店第4間日本酒店選址大阪,位於堂島區中心,地點優越,鄰近多個購物中心、商業區、觀光景點、藝術畫廊和博物館、多樣化的餐廳。酒店由日本多間知名建築公司及設計團隊聯手打造,揉合出日式傳統美學的全新奢華體驗。

酒店設備有多種精緻客房及套房可供選擇;並首次推出「GENSUI 玄水」樓層,住客於專屬 Sabo Lounge 享用早餐、品嚐日式茶道,令人猶如置身日式旅館之中。酒店亦設有多元餐飲體驗、水療中心、室內泳池、日式風呂等設備。

| | | Room Type (Sharing Twin, per person) | |
|--|--|--------------------------------------|--------------------------------------|
| No. of Nights | | Superior Room (43 – 46 sqm) | Tatami Premier Room (44 – 51 sqm) |
| 2 Nights | | From HK\$10,190 | From HK\$10,890 |
| 3 Nights | | | |
| <div> Exclusive Privileges 專享禮遇</div> <ul style="list-style-type: none">• 每日早餐• 每房美金\$100 酒店消費額• 房型升級 (視乎供應情況而定) <div>2 + 1 Bonus Night Offer</div> <p>現入住 3 晚或以上, 除專享禮遇外, 即可享免一晚房費</p> | | | |
| <div> 需另加收旺季附加費。Subject to high peak season surcharge.</div> | | | |





| Room Type (Sharing Twin, per person) | | |
|---|--------------------------------|--------------------------------------|
| No. of Nights | Superior Room (43 – 46 sqm) | Tatami Premier Room (44 – 51 sqm) |
| 2 Nights | From HK\$8,690 | From HK\$9,350 |
| <p>Early Bird Offer 早鳥優惠^</p> <p>提前預訂住宿，除專享禮遇外， 更可享高達 20% 的房價折扣 (單張為折扣後價錢)</p> <p>⚠ 需另加收旺季附加費。Subject to high peak season surcharge.</p> | | |



GENSUI Modern Ryokan Floor 玄水樓層

Enjoy the exclusive privileges at SABO Lounge



- Exclusive check-in service
- Welcome Japanese tea service
- Japanese bento-style breakfast daily
- Japanese tea and snacks daily at 11am – 8pm
- Local selection of whiskey, sake, red wine & white wine daily at 5 – 8pm

細則及條款 Terms & Conditions:

1. 套票價錢以每位計算，如有更改，恕不另行通知。Prices quoted are on per adult basis and subject to change without prior notice.
2. 只適用於新預訂之客人 Valid for new bookings only, subject to availability.
3. 以上酒店房種資料及圖片只供參考。The above hotel room types and photos are for reference only.
4. 可根據要求提供單人房、三人房或小童價錢，請聯繫我們查詢。Single, Triple or Child prices are available on request basis. Please contact us for details.
5. SHARE TWIN: 2 張床房/SINGLE ROOM: 單人房/SEMI DOUBLE: 房間面積較 TWIN/DOUBLE 細小或相等於 SINGLE/TWIN+EXTRA BED: 2 張床房加床。而加床並非正式固定床，尺寸會較小及有機會是梳化床/拉床/摺床。SHARE TWIN: 2 single bed/SINGLE ROOM: one single bed /SEMI DOUBLE: Room size is smaller than TWIN/DOUBLE ROOM or same as SINGLE ROOM/TWN+EXTRA BED: 2 Single Bed with Extra bed. Extra bed is not a formal fixed bed, the size will be smaller and it will be sofa bed/broach bed/folding bed.
6. 如果您希望在同一家酒店逗留更長時間，我們可以安排住宿延期請聯繫我們查詢。We can arrange to accommodation extension if you wish to stay longer in the same hotels. Please contact us for prices and details.
7. 需另加收旺季附加費。Subject to high peak season surcharge.
8. 必須在出發前至少 7 個工作日進行預訂。Reservations must be made at least 7 working days prior to departure.
9. 預訂確認後，恕不更改，取消和退款。No amendment, cancellation and refund once booking is confirmed.
10. 有關預訂條款和條件，請瀏覽：<https://www.jebsentravel.com/terms-and-conditions/>
For booking terms & conditions, please visit <https://www.jebsentravel.com/terms-and-conditions/>
11. 以上價錢不包括離境稅、香港機場保安費、航空保險附加費、航空燃油附加費、季節性附加費和旅行社服務費。Departure taxes, Hong Kong Airport Security Charge, airlines insurance surcharge, airlines fuel surcharge, seasonal surcharge and travel agency service fee are not included in the above fares.
12. 這些金額將在確認訂單後確定，並將添加到最終票價中。These amounts will be determined upon your confirmation of booking and will be added to the final fare.
13. 此優惠不能與其他任何促銷、優惠券或折扣一起使用。The offer cannot be used in conjunction with any other promotions, offers, vouchers or discounts.
14. 如有任何爭議，本公司保留最終決定權。The Travel Agency reserves final decision in case of any disputes.

Last Update: 17 Sep 2025
Issue 2 / 250PP