



酒店套票 Hotel Package

From **HKD3,190** 起*

4 – 5 晚 越南 胡志明市

4 – 5 nights Ho Chi Minh City, Vietnam

Travel & Stay Period: 26 Oct 2025 – 31 Mar 2026

✂ 套票包括 Package Details ✂

- ✧ 聯合航空來回香港至胡志明市經濟客位機票乙張
Round trip Economy Class air ticket between Hong Kong and Ho Chi Minh City by United Airlines
- ✧ 4 – 5 晚酒店住宿 4 – 5 nights hotel accommodation
- ✧ 旅監局 0.15%印花徵費 0.15% TIA Levy

航班 Flight

HKG – SGN	UA152	21:15	22:55
SGN – HKG	UA153	06:00	09:35

New daily service from 26 Oct 2025

★ 專享禮遇 Extra Benefit ★

來回胡志明市機場接送

Roundtrip Tan Son Nhat Airport Transfer

Hotel Indigo Saigon the City [www](http://www.hotelindigo.com)

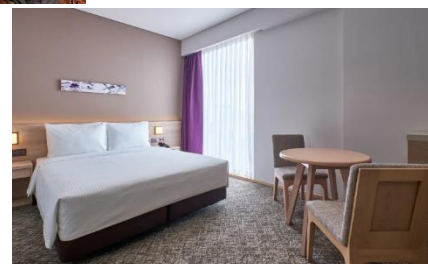
Newly opened in 2025

No. of Nights	Room Type (Sharing Twin, per person)
	Standard Room (30 sqm)
4 Nights	From HK\$4,290
5 Nights	From HK\$4,950

Sotetsu Grand Fresa Saigon [www](http://www.sotetsu.com)

Located in the center of Ho Chi Minh City.

No. of Nights	Room Type (Sharing Twin, per person)
	Premier Double Room (23 sqm)
4 Nights	From HK\$3,190
5 Nights	From HK\$3,850



*需另加收旺季附加費 Subject to high peak season surcharge

JT-SGN05UA-03

條款及細則

1. 套票價錢以每位計算，如有更改，恕不另行通知。
2. 乘坐聯合航空 (G Class, 2 – 14D)
3. 只適用於新預訂之客人。
4. 以上酒店房種資料、圖片、航班資料只供參考。
5. 可根據要求提供單人房、三人房或小童價錢，請聯繫我們查詢。
6. SHARE TWIN: 2 張床房/SINGLE ROOM: 單人房/SEMI DOUBLE: 房間面積較 TWIN/DOUBLE 細小或相等於 SINGLE/TWIN+EXTRA BED: 2 張床房加床。而加床並非正式固定床，尺寸會較小及有機會是梳化床/拉床/摺床。
7. 如果您希望在同一家酒店逗留更長時間，我們可以安排住宿延期請聯繫我們查詢。
8. 需另加收旺季附加費。
9. 必須在出發前至少 7 個工作日進行預訂。
10. 預訂確認後，恕不更改，取消和退款。
11. 有關預訂條款和條件，請訪問
<https://www.jebsentravel.com/terms-and-conditions/>
12. 以上價錢不包括離境稅、香港機場保安費、航空保險附加費、航空燃油附加費、季節性附加費和旅行社服務費。
13. 這些金額將在確認訂單後確定，並將添加到最終票價中。
14. 此優惠不能與其他任何促銷、優惠券或折扣一起使用。
15. 如有任何爭議，捷成假期保留最終決定權。

Terms & Conditions

1. Prices quoted are on per adult basis and subject to change without prior notice.
2. Air ticket on United Airlines (G Class, 2 – 14D).
3. Valid for new bookings only, subject to availability.
4. The above hotel room types, photos and flight schedule are for reference only.
5. Single, Triple or Child prices are available on request basis. Please contact us for details.
6. SHARE TWIN: 2 single bed/SINGLE ROOM: one single bed /SEMI DOUBLE: Room size is smaller than TWIN/DOUBLE ROOM or same as SINGLE ROOM/TWN+EXTRA BED: 2 Single Bed with Extra bed. Extra bed is not a formal fixed bed, the size will be smaller, and it will be sofa bed/broach bed/folding bed.
7. We can arrange to accommodation extension if you wish to stay longer in the same hotels. Please contact us for prices and details.
8. Subject to high peak season surcharge.
9. Reservations must be made at least 7 working days prior to departure.
10. No amendment, cancellation and refund once booking is confirmed.
11. For booking terms & conditions, please visit
<https://www.jebsentravel.com/terms-and-conditions>
12. Departure taxes, Hong Kong Airport Security Charge, airlines insurance surcharge, airlines fuel surcharge, seasonal surcharge and travel agency service fee are not included in the above fares.
13. These amounts will be determined upon your confirmation of booking and will be added to the final fare.
14. The offer cannot be used in conjunction with any other promotions, offers, vouchers or discounts.
15. The Travel Agency reserves final decision in case of any disputes.