

Tokyo

Fairmont Tokyo

Bonus Night Offer

出發及完成入住日期 Travel & Stay Period: 1 Nov 2025 – 19 Mar 2026

❗ 旺季出發,轉乘其他 Booking class 附加費等請向本公司職員查詢



✂ 套票包括 Package Details ✂

- ✧ 來回香港至東京成田國泰航空經濟客位機票乙張
Round trip tickets between Hong Kong and Tokyo (Narita) on Cathay Pacific
- ✧ 2-4 晚酒店住宿連早餐 2-4 nights accommodation with breakfast
- ✧ 0.15%旅監局印花費 0.15% TIA Levy



"Q" Class 2-7D
Light

Product Code
JT-TY003CX-44

Upgrade to Premium Economy Class or Business Class
for a surcharge from HK\$5,770 per person per way

2025 年 7 月 1 日最新開幕 - 東京費爾蒙酒店 [WWW](#)

雅高酒店集團旗下品牌「Fairmont Hotel」在東京芝浦區開設品牌的第一家酒店。芝浦區是東京近期最熱門的再開發地區，酒店的位置緊鄰濱離宮恩賜庭園，未來週邊將會有大型商場、人氣餐廳進駐。

提供 219 間高級客房、3 間餐廳酒吧、SPA、泳池、健身房等設施，集團特意邀請了奢華酒店御用設計團隊澳洲墨爾本 BAR Studio 設計酒店內裝。由於位處高層，從客房落地窗將可眺望東京港到東京都心的絕美景觀。酒店鄰近 JR 山手線及東京單軌電車濱松町站、大門站，交通十分便利。前往東京站/品川/銀座約 6 分鐘，前往新宿/涉谷約 20 分鐘車程。

No. of Nights	Room Type	
	Fairmont Bay View Room (52 sqm)	Fairmont Gold Suite King (88 sqm)
2 Nights	From \$9,590	From \$18,790
3 Nights		
4 Nights	From \$12,990	From \$26,650

❗ 需另加收旺季附加費。Subject to high peak season surcharge.

Bonus night offer:

- ✧ From now until 16 Mar 2026, enjoy a third night free when you book two consecutive nights.

Exclusive Privileges:

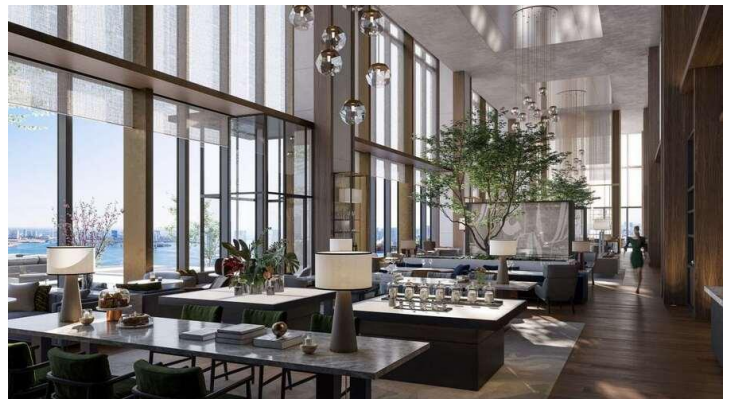
- ✧ Breakfast for two persons per room
- ✧ 100USD Hotel credit per stay
- ✧ Room upgrade at the time of booking
- ✧ Early check-in
- ✧ Late check-out of 2:00pm, confirmed at time of booking





Suite Benefits

- Private Check-in
- Fairmont Gold Lounge Access:
 - Breakfast
 - Refreshments
 - Afternoon Tea
 - Evening Cocktail
 - Night Snacks
- Dedicated Concierge Service
- Premium Amenities
- Personalized turn-down ritual



細則及條款 Terms & Conditions:

1. 套票價錢以每位計算，如有更改，恕不另行通知。Prices quoted are on per adult basis and subject to change without prior notice.
2. 只適用於新預訂之客人 Valid for new bookings only, subject to availability.
3. 以上酒店房種資料及圖片只供參考。The above hotel room types and photos are for reference only.
4. 可根據要求提供單人房、三人房或小童價錢，請聯繫我們查詢。Single, Triple or Child prices are available on request basis. Please contact us for details.
5. SHARE TWIN: 2 張床房/SINGLE ROOM: 單人房/SEMI DOUBLE: 房間面積較 TWIN/DOUBLE 細小或相等於 SINGLE/TWIN+EXTRA BED: 2 張床房加床。而加床並非正式固定床，尺寸會較小及有機會是梳化床/拉床/摺床。SHARE TWIN: 2 single bed/SINGLE ROOM: one single bed /SEMI DOUBLE: Room size is smaller than TWIN/DOUBLE ROOM or same as SINGLE ROOM/TWN+EXTRA BED: 2 Single Bed with Extra bed. Extra bed is not a formal fixed bed, the size will be smaller and it will be sofa bed/broach bed/folding bed.
6. 如果您希望在同一家酒店逗留更長時間，我們可以安排住宿延期請聯繫我們查詢。We can arrange to accommodation extension if you wish to stay longer in the same hotels. Please contact us for prices and details.
7. 需另加收旺季附加費。Subject to high peak season surcharge.
8. 必須在出發前至少 7 個工作日進行預訂。Reservations must be made at least 7 working days prior to departure.
9. 預訂確認後，恕不更改，取消和退款。No amendment, cancellation and refund once booking is confirmed.
10. 有關預訂條款和條件，請瀏覽：<https://www.jebsentravel.com/terms-and-conditions/>
For booking terms & conditions, please visit <https://www.jebsentravel.com/terms-and-conditions/>
11. 以上價錢不包括離境稅、香港機場保安費、航空保險附加費、航空燃油附加費、季節性附加費和旅行社服務費。Departure taxes, Hong Kong Airport Security Charge, airlines insurance surcharge, airlines fuel surcharge, seasonal surcharge and travel agency service fee are not included in the above fares.
12. 這些金額將在確認訂單後確定，並將添加到最終票價中。These amounts will be determined upon your confirmation of booking and will be added to the final fare.
13. 此優惠不能與其他任何促銷、優惠券或折扣一起使用。The offer cannot be used in conjunction with any other promotions, offers, vouchers or discounts.
14. 如有任何爭議，本公司保留最終決定權。The Travel Agency reserves final decision in case of any disputes.

Last Update: 27 Oct 2025
ISSUE 2/ 350/500PP