

Tokyo

The Peninsula Tokyo

Bonus Night Offer

出發及完成入住日期 Travel & Stay Period: 24 Sep 2025 – 28 Feb 2026

❗ 旺季出發,轉乘其他 Booking class 附加費等請向本公司職員查詢



✂ 套票包括 Package Details ✂

- ✧ 來回香港至東京成田國泰航空經濟客位機票乙張
Round trip tickets between Hong Kong and Tokyo (Narita) on Cathay Pacific
- ✧ 2 – 4 晚酒店住宿連早餐 2 – 4 nights accommodation with breakfast
- ✧ 0.15%旅監局印花徵費 0.15% TIA Levy



"Q" Class 2-7D
Light

Product Code
JT-TY005CX-43

WWW

酒店地點絕佳，有直通地鐵通道的出入口，讓入住的旅客可以很輕鬆抵達該城市最主要的商圈、辦公區和綠地。東京半島酒店讓旅客在幾乎能夠步行的範圍就到達銀座、有樂町等購物天堂，丸之內、大手町等重要的商辦與金融中心，當然還有皇居和日比谷公園。2025 年，東京半島酒店再次榮登《福布斯旅遊指南》年度五星級酒店榜單，這是酒店連續第十年獲此殊榮，而半島水療中心也連續第十一年榮獲福布斯五星評級。

No. of Nights	Room Type	
	Deluxe Room / Premier Room (54 sqm)	Grand Premier Park Room (63 sqm)
	Twin Sharing (per person)	Twin Sharing (per person)
2 Nights	From \$11,450	From \$15,990
3 Nights		
4 Nights	From \$15,550	From \$21,990

❗ 需另加收旺季附加費。Subject to high peak season surcharge.

Bonus Night Offer

❖ Stay 4 Pay 3^ OR Stay 3 Pay 2#

Exclusive Privileges:

- ❖ Breakfast for two persons per room
- ❖ 100USD Hotel credit per stay
- ❖ Guaranteed room upgrade at the time of booking
(including Grand Premier Park Room to Executive Suite)
- ❖ Guaranteed check in from 6am and late check-out until 10pm

#Booking period until 28 February 2026. Valid for stays until 30 September 2025 and from 1 January 2026 until 28 February 2026 inclusive.

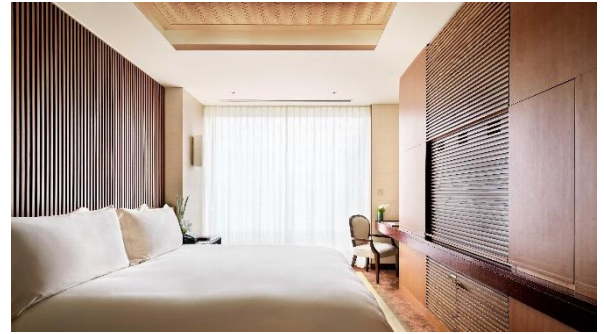
^Booking period until 15 December 2025. Valid for stays until 19 December 2025.





Complimentary Suite Benefits

- Complimentary daily dinner drop-off around Ginza area (From 5pm to 9:30pm, 10km radius from hotel)
- Complimentary mini bar replenished daily
- Complimentary special amenities
- Chauffeur service with MINI Cooper (3 hours daily within 10km radius of hotel)



細則及條款 Terms & Conditions:

1. 套票價錢以每位計算，如有更改，恕不另行通知。Prices quoted are on per adult basis and subject to change without prior notice.
2. 只適用於新預訂之客人 Valid for new bookings only, subject to availability.
3. 以上酒店房種資料及圖片只供參考。The above hotel room types and photos are for reference only.
4. 可根據要求提供單人房、三人房或小童價錢，請聯繫我們查詢。Single, Triple or Child prices are available on request basis. Please contact us for details.
5. SHARE TWIN: 2 張床房/SINGLE ROOM: 單人房/SEMI DOUBLE: 房間面積較 TWIN/DOUBLE 細小或相等於 SINGLE/TWIN+EXTRA BED: 2 張床房加床。而加床並非正式固定床，尺寸會較小及有機會是梳化床/拉床/摺床。SHARE TWIN: 2 single bed/SINGLE ROOM: one single bed /SEMI DOUBLE: Room size is smaller than TWIN/DOUBLE ROOM or same as SINGLE ROOM/TWN+EXTRA BED: 2 Single Bed with Extra bed. Extra bed is not a formal fixed bed, the size will be smaller and it will be sofa bed/broach bed/folding bed.
6. 如果您希望在同一家酒店逗留更長時間，我們可以安排住宿延期請聯繫我們查詢。We can arrange to accommodation extension if you wish to stay longer in the same hotels. Please contact us for prices and details.
7. 需另加收旺季附加費。Subject to high peak season surcharge.
8. 必須在出發前至少 7 個工作日進行預訂。Reservations must be made at least 7 working days prior to departure.
9. 預訂確認後，恕不更改，取消和退款。No amendment, cancellation and refund once booking is confirmed.
10. 有關預訂條款和條件，請瀏覽：<https://www.jebsenttravel.com/terms-and-conditions/>
For booking terms & conditions, please visit <https://www.jebsenttravel.com/terms-and-conditions/>
11. 以上價錢不包括離境稅、香港機場保安費、航空保險附加費、航空燃油附加費、季節性附加費和旅行社服務費。Departure taxes, Hong Kong Airport Security Charge, airlines insurance surcharge, airlines fuel surcharge, seasonal surcharge and travel agency service fee are not included in the above fares.
12. 這些金額將在確認訂單後確定，並將添加到最終票價中。These amounts will be determined upon your confirmation of booking and will be added to the final fare.
13. 此優惠不能與其他任何促銷、優惠券或折扣一起使用。The offer cannot be used in conjunction with any other promotions, offers, vouchers or discounts.
14. 如有任何爭議，本公司保留最終決定權。The Travel Agency reserves final decision in case of any disputes.

Last Update: 17 Sep 2025
ISSUE 1/ 350PP / 500PP